

DESCRIPTION

LOT NO. 58

DIAMOND MARSH DRIVE

DIAMOND MARSH SUBDIVISION – STAGE 2

ALL THAT piece or parcel of land situate and being on the Southeast side of Diamond Marsh Drive, in the City of St. John's, in the Province of Newfoundland and Labrador, Canada, bounded and abutted as follows, that is to say: Beginning at a point, the said point having T.M. Grid Co-ordinates (NAD 83) of N 5,261,523.676 m and E 319,885.808 m with reference to Monument No. 80G2121 with Co-ordinates of N 5,262,169.686 m and E 319,117.227 m;

THENCE running along the Southeastern limits of Diamond Marsh Drive North fifty four degrees zero two minutes zero one seconds East fifteen decimal zero metres;

THENCE turning and running by Lot No. 57 South thirty five degrees fifty seven minutes fifty nine seconds East thirty decimal zero metres;

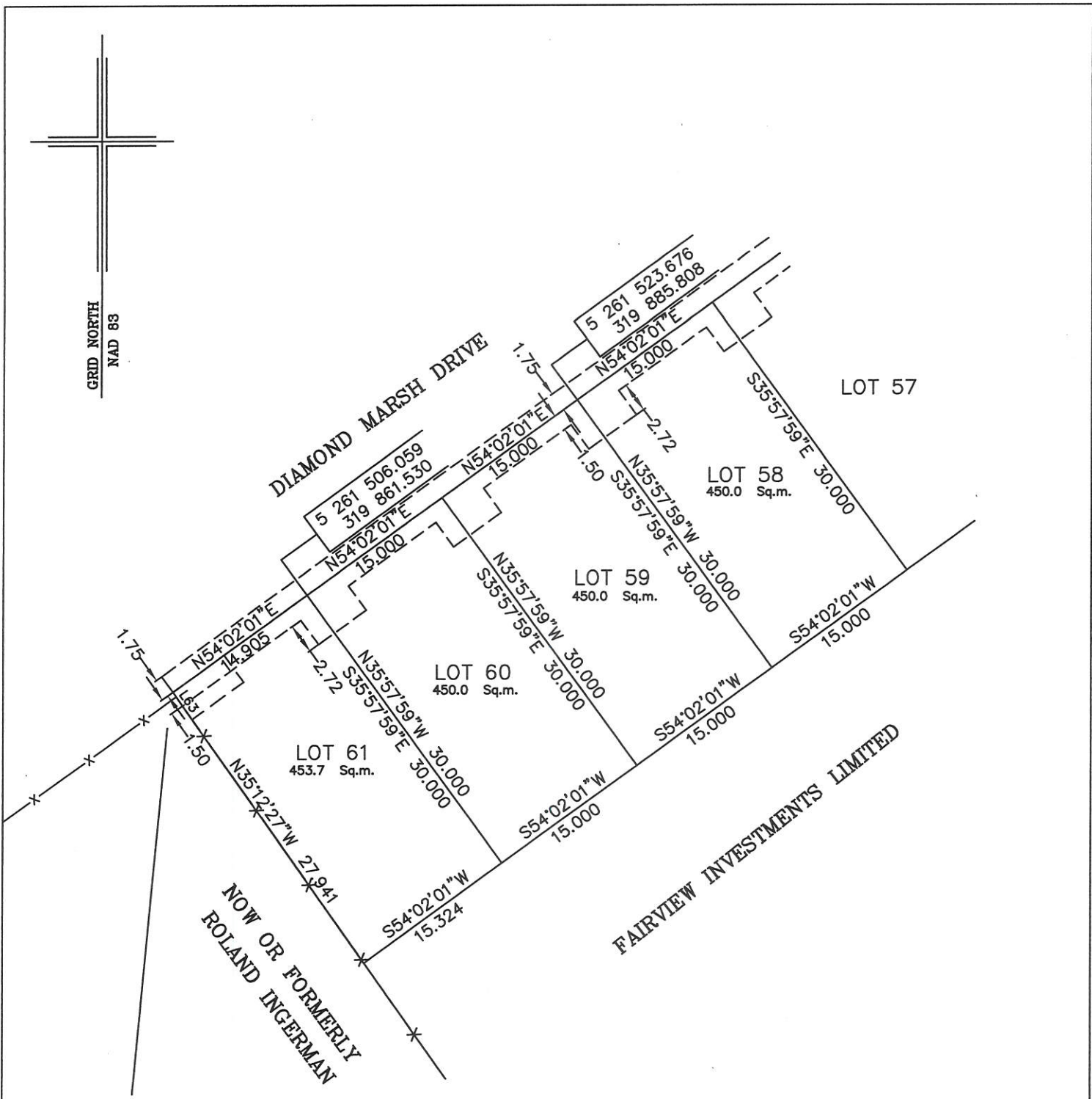
THENCE turning and running by land of Fairview Investments Limited South fifty four degrees zero two minutes zero one seconds West fifteen decimal zero metres;

THENCE turning and running by Lot No. 59 North thirty five degrees fifty seven minutes fifty nine seconds West thirty decimal zero metres more or less to the point of beginning and containing in all an area of 450.0 square metres as more particularly described on the plan hereto annexed. **RESERVING NEVERTHELESS** an easement for a powerline as shown on the said attached plan and being more particularly described on Nfld. Power Plan No. 1-1101-31-928A_REV_B.

ALL bearings are referred to Grid North.

Job No. 13-492

Date: January 2017



NOTE: ALL UTILITY EASEMENTS SHOWN ARE MORE PARTICULARLY DESCRIBED ON NFLD. POWER PLAN NO. 1-1101-31-928A_REV_B

MONUMENTS USED FOR TIE-IN ARE IN ZONE 1.

CONTROL MONUMENTS USED (NAD 83)

80G2121 N 5 262 169.686 E 319 117.227

SCALE FACTOR OF 0.999890 USED FOR THE COMPUTATIONS OF STARTING CO-ORDINATES ALL OTHER DISTANCES ARE HORIZONTAL GROUND DISTANCES.

NUM	BEARING	DISTANCE
L63	N34°36'59"W	2.062

	PLOT PLAN	
	LOT NOS. 58-61 DIAMOND MARSH DRIVE DIAMOND MARSH SUBDIVISION - STAGE 2 St. JOHN'S, NL	
	WILLIAM DOYLE & ASSOCIATES LTD. Newfoundland Land Surveyors	
	SCALE: 1:500	JOB NO. 13-492
DATE: JANUARY 2017	DRAWN BY: W.M.D.	