

DESCRIPTION

LOT NO. 173

DIAMOND MARSH DRIVE

DIAMOND MARSH SUBDIVISION – STAGE 2

ALL THAT piece or parcel of land situate and being on the Northwest side of Diamond Marsh Drive, in the City of St. John's, in the Province of Newfoundland and Labrador, Canada, bounded and abutted as follows, that is to say: Beginning at a point, the said point having T.M. Grid Co-ordinates (NAD 83) of N 5,261,432.822 m and E 319,735.067 m with reference to Monument No. 80G2121 with Co-ordinates of N 5,262,169.686 m and E 319,117.227 m;

THENCE running by Lot No. 172 North thirty five degrees fifty seven minutes fifty nine seconds West twenty one decimal three six three metres;

THENCE turning and running by properties fronting on Gisborne Place North fifty five degrees thirty four minutes eleven seconds East twenty one decimal five zero eight metres;

THENCE turning and running by Lot No. 174 South thirty five degrees fifty seven minutes fifty nine seconds East twenty decimal seven eight six metres;

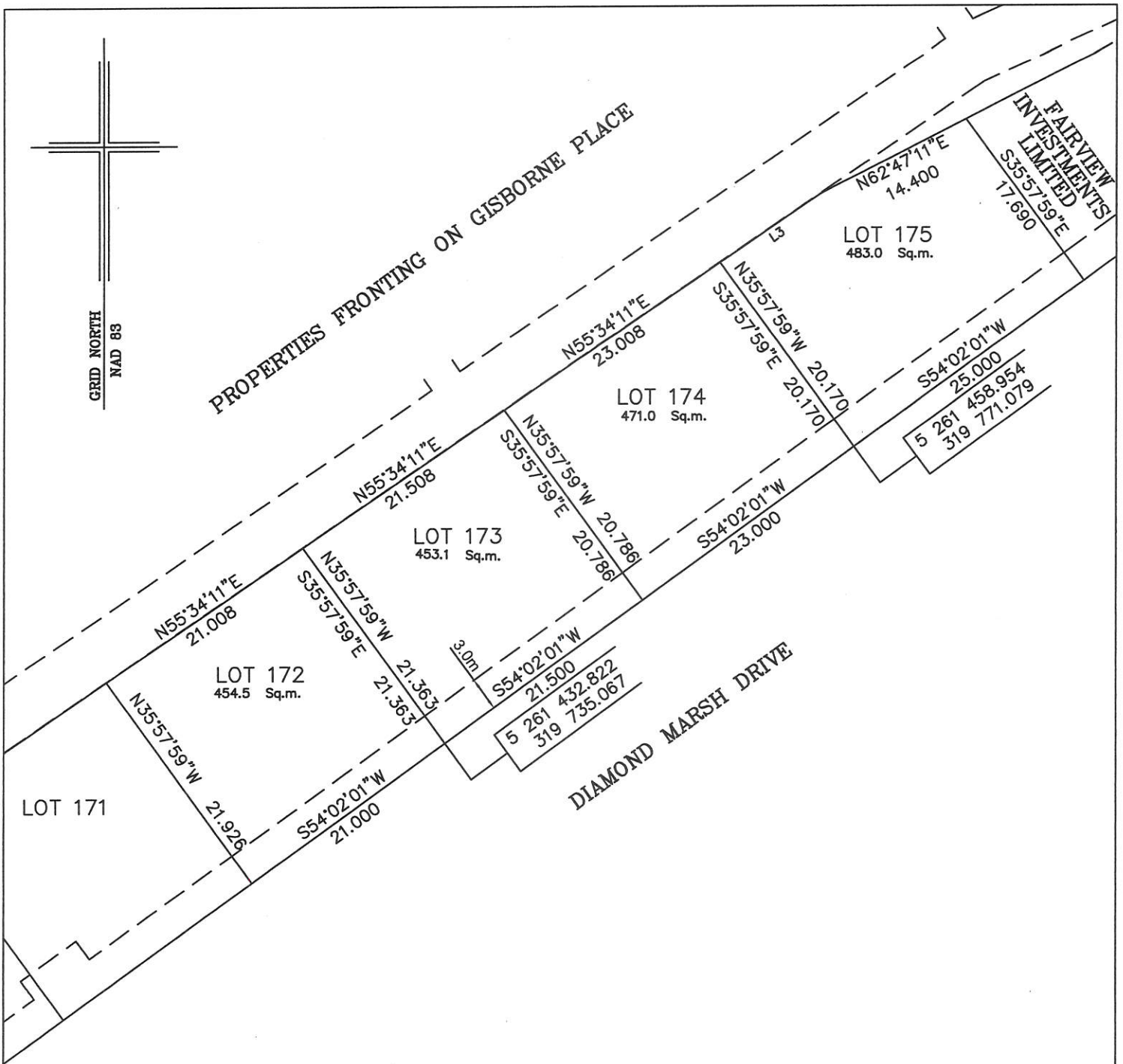
THENCE turning and running along the Northwestern limits of Diamond Marsh Drive South fifty four degrees zero two minutes zero one seconds West twenty one decimal five zero zero metres more or less to the point of beginning and containing in all an area of 453.1 square metres as more particularly described on the plan hereto annexed.

RESERVING NEVERTHELESS an easement for a powerline as shown on the said attached plan and being more particularly described on Nfld. Power Plan No. 1-1101-31-928A_REV_B.

ALL bearings are referred to Grid North.

Job No. 13-492

Date: January 2017



NOTE: ALL POWERLINE EASEMENTS SHOWN ARE MORE PARTICULARLY DESCRIBED ON NFLD. POWER PLAN NO. 1-1101-31-905A_REV_A

MONUMENTS USED FOR TIE-IN ARE IN ZONE 1.

CONTROL MONUMENTS USED (NAD 83)

80G2121 N 5 262 169.686 E 319 117.227

SCALE FACTOR OF 0.999890 USED FOR THE COMPUTATIONS OF STARTING CO-ORDINATES ALL OTHER DISTANCES ARE HORIZONTAL GROUND DISTANCES.

NUM	BEARING	DISTANCE
L3	N55°34'11"E	10.772

PLOT PLAN

LOT NOS. 172-175 DIAMOND MARSH DRIVE
DIAMOND MARSH SUBDIVISION - STAGE 2
St. JOHN'S, NL.

WILLIAM DOYLE & ASSOCIATES LTD.
Newfoundland Land Surveyors

SCALE: 1:500

JOB NO. 13-492

DATE: JANUARY 2017

DRAWN BY: W.M.D.

