

DESCRIPTION

LOT NO. 158

DIAMOND MARSH DRIVE

DIAMOND MARSH SUBDIVISION – STAGE 2

ALL THAT piece or parcel of land situate and being on the Northwest side of Diamond Marsh Drive, in the City of St. John's, in the Province of Newfoundland and Labrador, Canada, bounded and abutted as follows, that is to say: Beginning at a point, the said point having T.M. Grid Co-ordinates (NAD 83) of N 5,261,704.081 m and E 319,976.232 m with reference to Monument No. 80G2121 with Co-ordinates of N 5,262,169.686 m and E 319,117.227 m;

THENCE running along the Northwestern limits of Diamond Marsh Drive along the arc of a curve having a chord bearing and distance of South twenty three degrees fifty five minutes zero nine seconds West six decimal five seven three metres and a radius of 42.500 metres; **THENCE** South nineteen degrees twenty nine minutes zero four seconds West eight decimal four four seven metres;

THENCE turning and running by Lot No. 159 North seventy degrees thirty minutes fifty six seconds West twenty nine decimal seven five one metres;

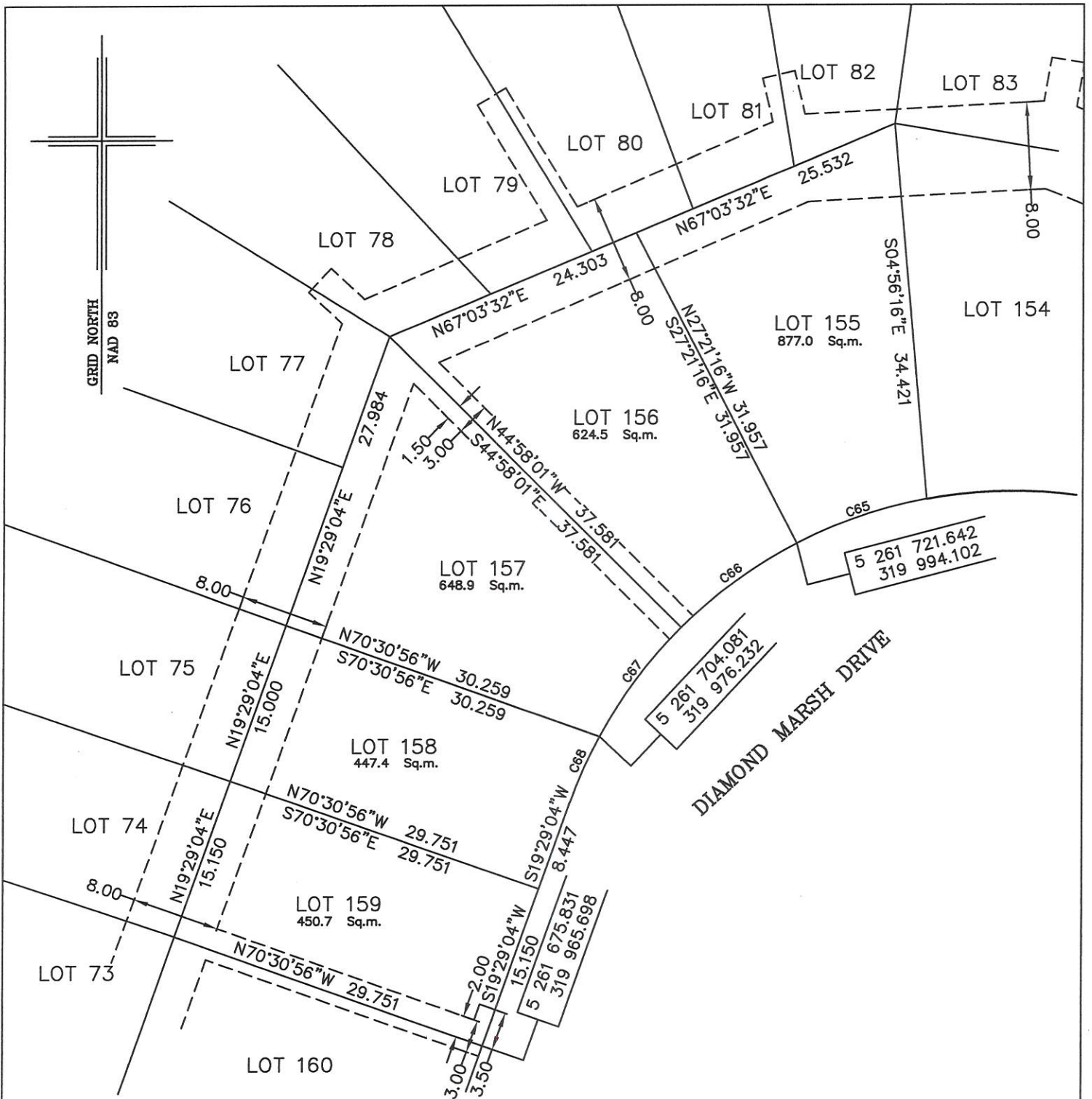
THENCE turning and running by Lot No. 75 North nineteen degrees twenty nine minutes zero four seconds East fifteen decimal zero metres;

THENCE turning and running by Lot No. 157 South seventy degrees thirty minutes fifty six seconds East thirty decimal two five nine metres more or less to the point of beginning and containing in all an area of 447.4 square metres as more particularly described on the plan hereto annexed. **RESERVING NEVERTHELESS** an easement for a powerline as shown on the said attached plan and being more particularly described on Nfld. Power Plan No. 1-1101-31-928A_REV_B.

ALL bearings are referred to Grid North.

Job No. 13-492

Date: January 2017



NOTE: ALL UTILITY EASEMENTS SHOWN ARE MORE PARTICULARLY DESCRIBED ON NFLD. POWER PLAN NO. 1-1101-31-928A_REV_B

MONUMENTS USED FOR TIE-IN ARE IN ZONE 1.

CONTROL MONUMENTS USED (NAD 83)

80G2121 N 5 262 169.686 E 319 117.227

SCALE FACTOR OF 0.999890 USED FOR THE COMPUTATIONS OF STARTING CO-ORDINATES
ALL OTHER DISTANCES ARE HORIZONTAL GROUND DISTANCES.

NUM	ARC	RADIUS	BEARING	DISTANCE
C65	12.510	42.500	S71°04'42\"W	12.465
C66	13.065	42.500	S53°50'21\"W	13.013
C67	12.371	42.500	S36°41'36\"W	12.328
C68	6.579	42.500	S23°55'09\"W	6.573



PLOT PLAN
LOT NOS. 155-159 DIAMOND MARSH DRIVE
DIAMOND MARSH SUBDIVISION - STAGE 2
St. JOHN'S, NL.

WILLIAM DOYLE & ASSOCIATES LTD.
 Newfoundland Land Surveyors

SCALE: 1:500

JOB NO. 13-492

DATE: JANUARY 2017

DRAWN BY: W.M.D.