

**DESCRIPTION**

**LOT NO. 145**

**DIAMOND MARSH DRIVE**

**DIAMOND MARSH SUBDIVISION – STAGE 2**

**ALL THAT** piece or parcel of land situate and being on the West side of Diamond Marsh Drive, in the City of St. John's, in the Province of Newfoundland and Labrador, Canada, bounded and abutted as follows, that is to say: Beginning at a point, the said point having T.M. Grid Co-ordinates (NAD 83) of N 5,261,735.789 m and E 320,154.751 m with reference to Monument No. 80G2121 with Co-ordinates of N 5,262,169.686 m and E 319,117.227 m;

**THENCE** running by Lot No. 146 North fifty eight degrees thirty nine minutes twenty seven seconds West thirty three decimal eight zero four metres;

**THENCE** turning and running by Lot No. 89 North thirteen degrees thirty six minutes zero three seconds East eight decimal three nine one metres;

**THENCE** turning and running by Lot No. 144 South eighty four degrees forty seven minutes fifty two seconds East thirty three decimal four five one metres;

**THENCE** turning and running along the Western limits of Diamond Marsh Drive along the arc of a curve having a chord bearing and distance of South fifteen degrees forty six minutes thirty six seconds West twenty three decimal five nine five metres and a radius of 47.500 metres more or less to the point of beginning and containing in all an area of 546.5 square metres as more particularly described on the plan hereto annexed.

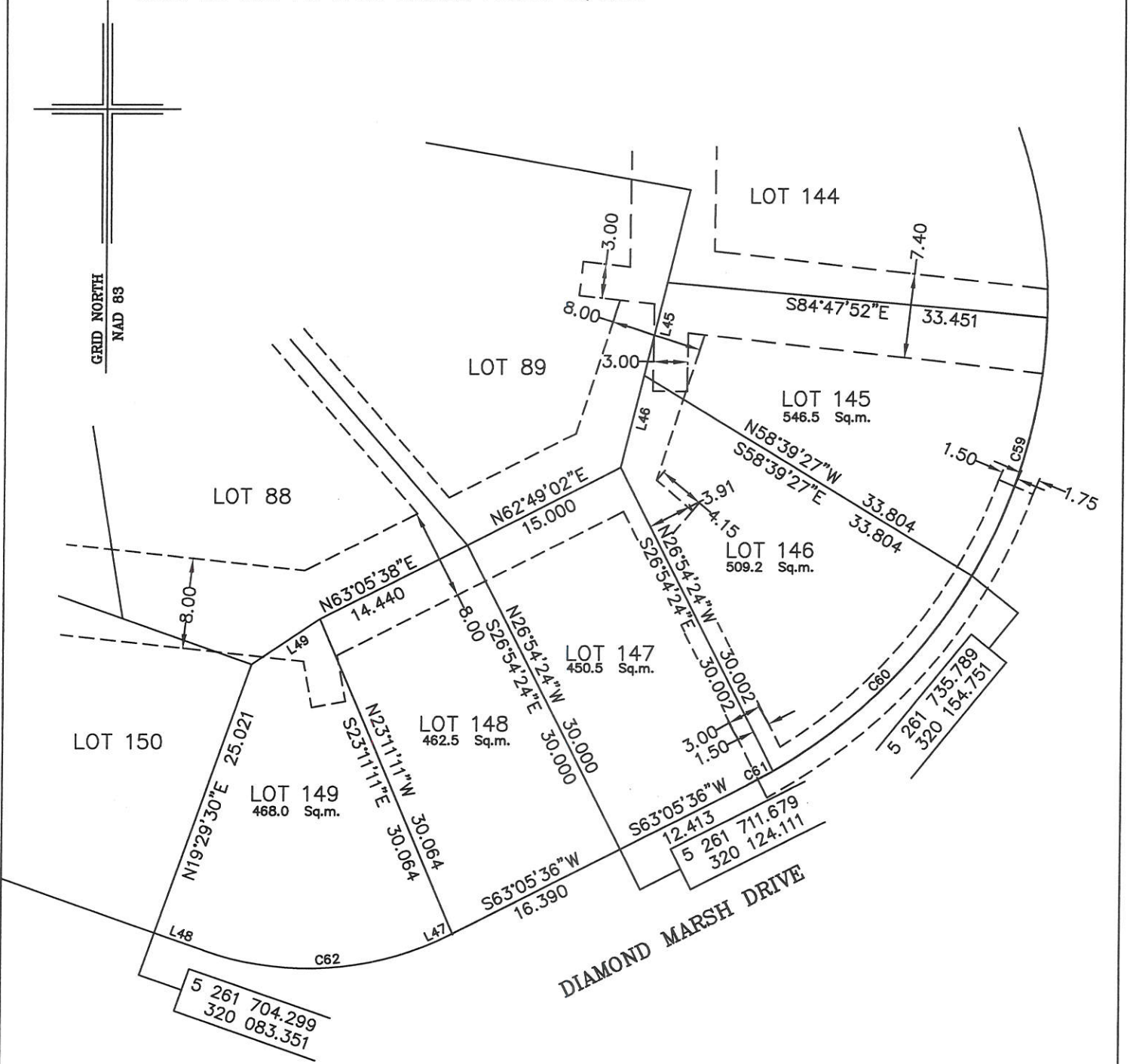
**RESERVING NEVERTHELESS** an easement for a powerline as shown on the said attached plan and being more particularly described on Nfld. Power Plan No. 1-1101-31-905A\_REV\_A & 1-1101-31-928A\_REV\_B.

**ALL** bearings are referred to Grid North.

Job No. 13-492

Date: January 2017

NOTE: LOT NOS. 146 & 147 REVISED: AUGUST 30, 2018



NOTE: ALL UTILITY EASEMENTS SHOWN ARE MORE PARTICULARLY DESCRIBED ON NFLD. POWER PLAN NO. 1-1101-31-928A\_REV\_B & 1-1101-31-905A\_REV\_A

MONUMENTS USED FOR TIE-IN ARE IN ZONE 1.

CONTROL MONUMENTS USED (NAD 83)

80G2121 N 5 261 169.686 E 319 117.227

SCALE FACTOR OF 0.999890 USED FOR THE COMPUTATIONS OF STARTING CO-ORDINATES ALL OTHER DISTANCES ARE HORIZONTAL GROUND DISTANCES.

NUM	BEARING	DISTANCE
L45	N13°36'03"E	8.391
L46	N13°55'25"E	8.336
L47	S63°05'36"W	0.216
L48	N70°30'30"W	4.599
L49	N56°03'44"E	7.187

NUM	ARC	RADIUS	BEARING	DISTANCE
C59	23.844	47.500	S15°46'36"W	23.595
C60	24.717	47.500	S45°03'52"W	24.439
C61	2.588	47.500	S61°31'57"W	2.588
C62	22.269	27.500	S86°17'33"W	21.666



**PLOT PLAN**  
**LOT NOS. 145-149 DIAMOND MARSH DRIVE**  
**DIAMOND MARSH SUBDIVISION - STAGE 2**  
**St. JOHN'S, NL.**

**WILLIAM DOYLE & ASSOCIATES LTD.**  
 Newfoundland Land Surveyors

SCALE: 1:500

JOB NO. 13-492

DATE: JANUARY 2017

DRAWN BY: W.M.D.