



31 Hallett Crescent

Former ICS Courier

3700 sq. ft.

FINISHES

CEILING:

2"x4" T-BAR: VESTIBULE, RECEPTION
GENERAL OFFICE, OFFICE #1
CONTROL ROOM, BARRIER FREE WC
SMALL WC, OFFICE #2
STORAGE ROOM, CLOSET

EXPOSED METAL DECK: WAREHOUSE

NOTE: 16mm TYPE 'X' GYPSUM BOARD ON
UNDERSIDE OF WOOD TRUSSES
ABOVE ALL T-BAR CEILINGS

FLOORS

VINYL COMPOSITE TILE (VCT)

VESTIBULE, RECEPTION, GENERAL OFFICE
OFFICE #1, CONTROL ROOM, BARRIER FREE
WC, SMALL WC, OFFICE #2,
STORAGE ROOM, CLOSET

FINISHED CONCRETE: WAREHOUSE

NOTE: VCT LAID ON CONG. SLABS

PARTITIONS

ALL INTER PARTITIONS: 38x89 WOOD STUDS,
BATT INSUL, 16mm GYPSUM BD BOTH
SIDES UNLESS NOTED OTHERWISE

NOTE: DEMISING PARTITIONS BETWEEN
BOTH ADJACENT RENTAL SUITES (DOOR #
SOUTH) TO BE 1-HOUR FIRE SEPARATIONS

DOORS

ALUMINUM: #1 (914x2134) EXISTING

WOOD: #2, 3, 4, 5, 6, 8, 11 (914x2032)

WOOD: #7, 9, 12 (813x2032)

STEEL: #10 (EXISTING)

NOTE: DOORS #2, 3, 4, 5, 6, 8 & 11
TO HAVE LEVERED HARDWARE
DOOR #1 TO HAVE HARDWARE

ARCHITECT

FACILITIES DESIGN GROUP INC.

P.O. Box 8021

ST. JOHN'S, NF

A1B 3M7



FLOOR PLAN

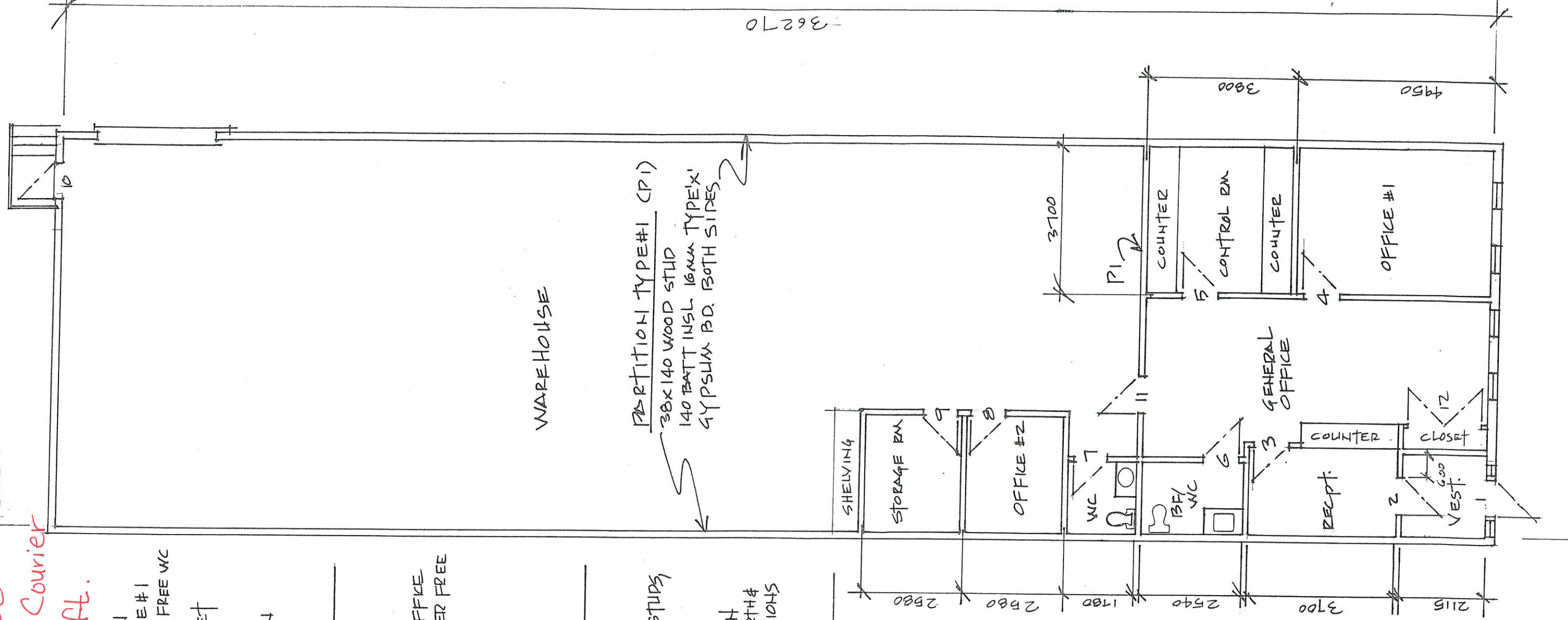
ICS COURIER LTD.

31 HALLETT CR

ST. JOHN'S, NL

JUNE 12, 2007

1:100



36270