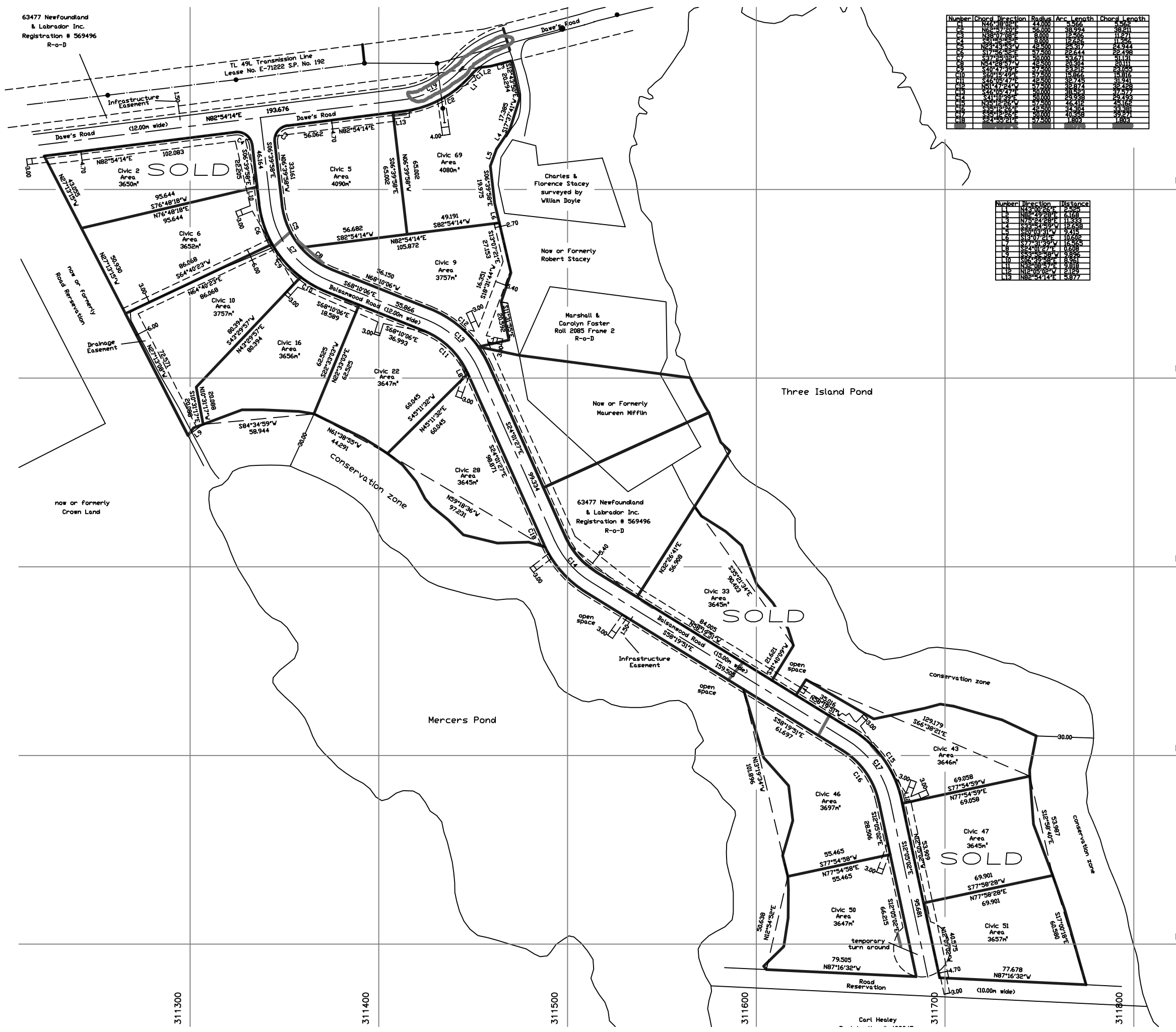


Number	Chord	Direction	Radius	Arc Length	Chord Length
C1	N62°54'14"E	21.000	3.000	3.000	3.000
C2	N62°54'14"E	56.000	38.994	38.994	38.994
C3	N62°54'14"E	8.000	12.664	11.971	11.971
C4	N62°54'14"E	8.000	12.664	11.971	11.971
C5	N62°54'14"E	49.500	33.317	32.924	32.924
C6	S17°58'28"W	57.500	33.644	32.938	32.938
C7	S17°58'28"W	57.500	33.644	32.938	32.938
C8	N54°28'57"W	49.500	33.317	32.924	32.924
C9	S17°58'28"W	57.500	33.644	32.938	32.938
C10	S17°58'28"W	57.500	33.644	32.938	32.938
C11	S17°58'28"W	49.500	33.317	32.924	32.924
C12	N51°47'24"W	57.500	33.644	32.938	32.938
C13	N51°47'24"W	57.500	33.644	32.938	32.938
C14	S17°58'28"W	50.000	33.538	32.752	32.752
C15	S17°58'28"W	49.500	33.317	32.924	32.924
C16	S17°58'28"W	50.000	33.538	32.752	32.752
C17	S17°58'28"W	50.000	33.538	32.752	32.752
C18	S24°52'21"E	57.500	33.644	32.938	32.938

Number	Direction	Distance
1	N62°54'14"E	5.000
2	N62°54'14"E	5.000
3	N62°54'14"E	5.000
4	N62°54'14"E	5.000
5	N62°54'14"E	5.000
6	N62°54'14"E	5.000
7	N62°54'14"E	5.000
8	N62°54'14"E	5.000
9	N62°54'14"E	5.000
10	N62°54'14"E	5.000
11	N62°54'14"E	5.000
12	N62°54'14"E	5.000
13	N62°54'14"E	5.000
14	N62°54'14"E	5.000
15	N62°54'14"E	5.000



311300

311400

311500

311600

311700

311800

Carl Healey