

DESCRIPTION
LOT NO. 336
WESTGATE SUBDIVISION – STAGE 5

ALL THAT piece or parcel of land situate and being on the Southwest side of Cape Fox Street, in the City of St. John's, in the Province of Newfoundland and Labrador, Canada, bounded and abutted as follows, that is to say: Beginning at a point, the said point having T.M. Grid Co-ordinates (NAD 83) of N 5,267,072.304 m and E 319,675.624 m with reference to Monument No. 80G2181 with Co-ordinates of N 5,267,822.526 m and E 321,320.272 m;

THENCE running by Lot No. 335 South fifty seven degrees twenty seven minutes zero three seconds West thirty two decimal three four eight metres;

THENCE turning and running by Lot No. 341 North thirty two degrees thirty two minutes fifty seven seconds West sixteen decimal three zero seven metres;

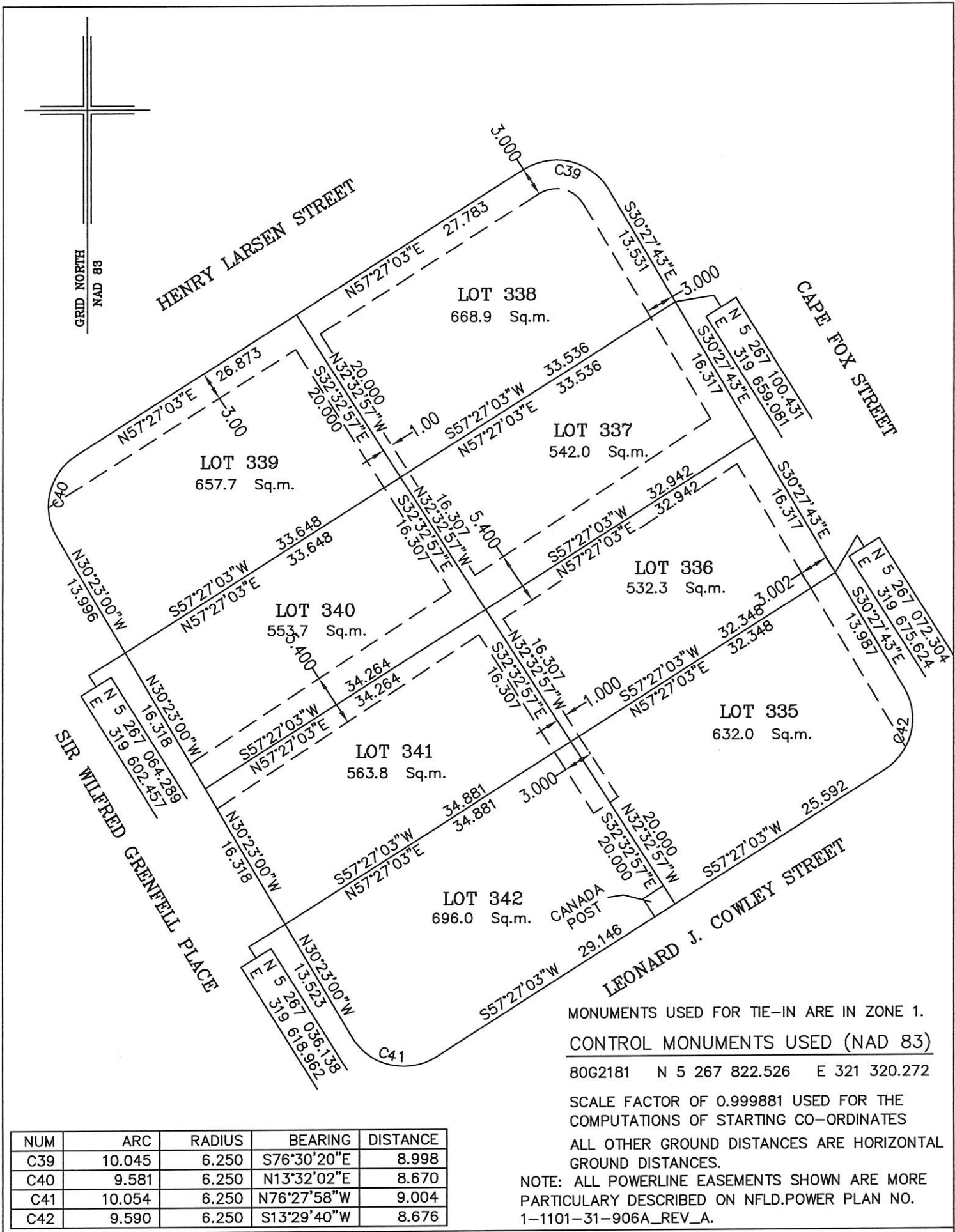
THENCE turning and running by Lot No. 337 North fifty seven degrees twenty seven minutes zero three seconds East thirty two decimal nine four two metres;

THENCE turning and running along the Southwestern Limits of Cape Fox Street South thirty degrees twenty seven minutes forty three seconds East sixteen decimal three one seven metres more or less to the point of beginning and containing in all an area of 532.3 square metres as more particularly described on the plan hereto annexed. **RESERVING NEVERTHELESS** an easement for a powerline as shown on the said attached plan and being more particularly described on the Nfld. Power Plan No. 1-1101-31-906A_REV_A.

ALL bearings are referred to Grid North.

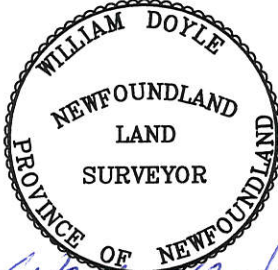
Job No. 12-799

Date: July, 2013



MONUMENTS USED FOR TIE-IN ARE IN ZONE 1.
 CONTROL MONUMENTS USED (NAD 83)
 80G2181 N 5 267 822.526 E 321 320.272
 SCALE FACTOR OF 0.999881 USED FOR THE
 COMPUTATIONS OF STARTING CO-ORDINATES
 ALL OTHER GROUND DISTANCES ARE HORIZONTAL
 GROUND DISTANCES.
 NOTE: ALL POWERLINE EASEMENTS SHOWN ARE MORE
 PARTICULARLY DESCRIBED ON NFLD.POWER PLAN NO.
 1-1101-31-906A_REV_A.

NUM	ARC	RADIUS	BEARING	DISTANCE
C39	10.045	6.250	S76°30'20"E	8.998
C40	9.581	6.250	N13°32'02"E	8.670
C41	10.054	6.250	N76°27'58"W	9.004
C42	9.590	6.250	S13°29'40"W	8.676

 <i>William Doyle</i>	PLOT PLAN	
	LOT NOS. 339-342 SIR WILFRED GRENFELL PLACE & 335-338 CAPE FOX STREET - WESTGATE SUBDIVISION - STAGE 5 ST. JOHN'S, NL	
	WILLIAM DOYLE & ASSOCIATES LTD. Newfoundland Land Surveyors	
	SCALE: 1:500	JOB NO. 12-799
DATE: JULY 2013	DRAWN BY: R.S.\W.M.D.	