

DESCRIPTION
LOT NO. 318
WESTGATE SUBDIVISION – STAGE 5

ALL THAT piece or parcel of land situate and being on the Northwest side of Leonard J. Cowley Street, in the City of St. John's, in the Province of Newfoundland and Labrador, Canada, bounded and abutted as follows, that is to say: Beginning at a point, the said point having T.M. Grid Co-ordinates (NAD 83) of N 5,267,112.532 m and E 319,758.412 m with reference to Monument No. 80G2181 with Co-ordinates of N 5,267,822.526 m and E 321,320.272 m;

THENCE running along the Northwestern Limits of Leonard J. Cowley Street along the arc of a curve having a chord bearing and distance of South seventy one degrees eighteen minutes eleven seconds West ten decimal eight seven two metres and a radius of 17.000 metres;

THENCE turning and running by Lot No. 317 North twenty nine degrees fifty five minutes thirty three seconds West thirty decimal zero one one metres;

THENCE turning and running by Lot Nos. 310 & 309 North fifty eight degrees forty three minutes eleven seconds East twenty decimal five seven zero metres;

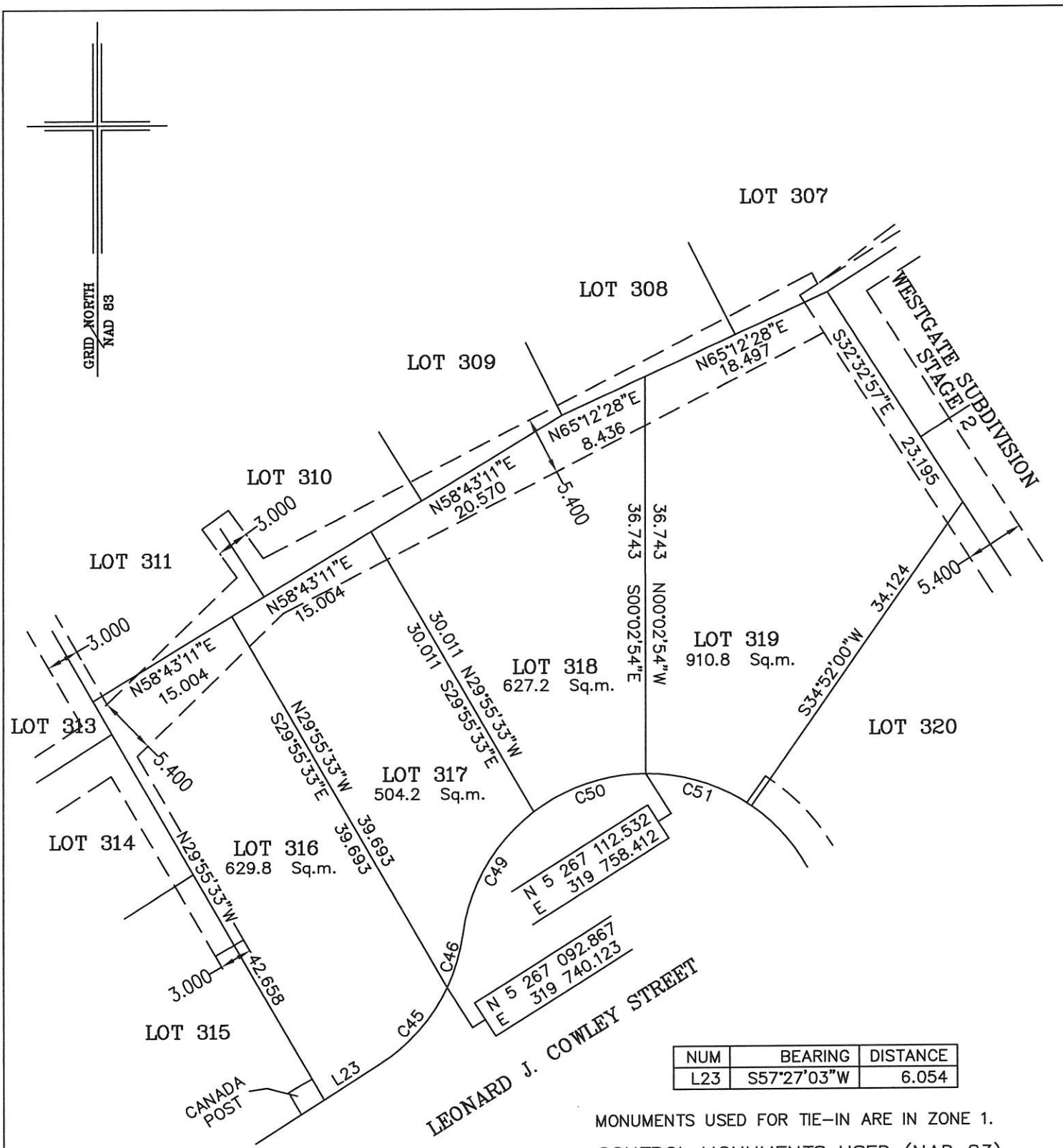
THENCE turning and running by Lot No. 308 North sixty five degrees twelve minutes twenty eight seconds East eight decimal four three six metres;

THENCE turning and running by Lot No. 319 South zero degrees zero two minutes fifty four seconds East thirty six decimal seven four three metres more or less to the point of beginning and containing in all an area of 627.2 square metres as more particularly described on the plan hereto annexed. **RESERVING NEVERTHELESS** an easement for a powerline as shown on the said attached plan and being more particularly described on the Nfld. Power Plan No. 1-1101-31-906A_REV_A

ALL bearings are referred to Grid North.

Job No. 12-799

Date: July, 2013



NUM	BEARING	DISTANCE
L23	S57°27'03\"W	6.054

MONUMENTS USED FOR TIE-IN ARE IN ZONE 1.
 CONTROL MONUMENTS USED (NAD 83)
 80G2181 N 5 267 822.526 E 321 320.272
 SCALE FACTOR OF 0.999881 USED FOR THE
 COMPUTATIONS OF STARTING CO-ORDINATES
 ALL OTHER GROUND DISTANCES ARE HORIZONTAL
 GROUND DISTANCES.

NUM	ARC	RADIUS	BEARING	DISTANCE
C45	9.581	17.000	S41°18'17\"W	9.455
C46	5.178	17.000	S16°25'59\"W	5.158
C49	13.336	17.000	S30°10'52\"W	12.997
C50	11.066	17.000	S71°18'11\"W	10.872
C51	10.360	17.000	N72°35'27\"W	10.200

NOTE: ALL POWERLINE EASEMENTS SHOWN ARE MORE PARTICULARLY DESCRIBED ON NFLD.POWER PLAN NO. 1-1101-31-906A_REV_A. & 1-1101-31-867a



PLOT PLAN
 LOT NOS. 316-319 LEONARD J. COWLEY STREET
 WESTGATE SUBDIVISION - STAGE 5
 ST. JOHN'S, NL

WILLIAM DOYLE & ASSOCIATES LTD.
 Newfoundland Land Surveyors

SCALE:	1:500	JOB NO.	12-799
DATE:	JULY 2013	DRAWN BY:	R.S.\W.M.D.