

DESCRIPTION
LOT NO. 341
WESTGATE SUBDIVISION – STAGE 5

ALL THAT piece or parcel of land situate and being on the Northeast side of Street 12, in the City of St. John's, in the Province of Newfoundland and Labrador, Canada, bounded and abutted as follows, that is to say: Beginning at a point, the said point having T.M. Grid Co-ordinates (NAD 83) of N 5,267,036.138 m and E 319,618.962 m with reference to Monument No. 80G2181 with Co-ordinates of N 5,267,822.526 m and E 321,320.272 m;

THENCE running along the Northeastern Limits of Street 12 North thirty degrees twenty three minutes zero seconds West sixteen decimal three one eight metres;

THENCE turning and running by Lot No. 340 North fifty seven degrees twenty seven minutes zero three seconds East thirty four decimal two six four metres;

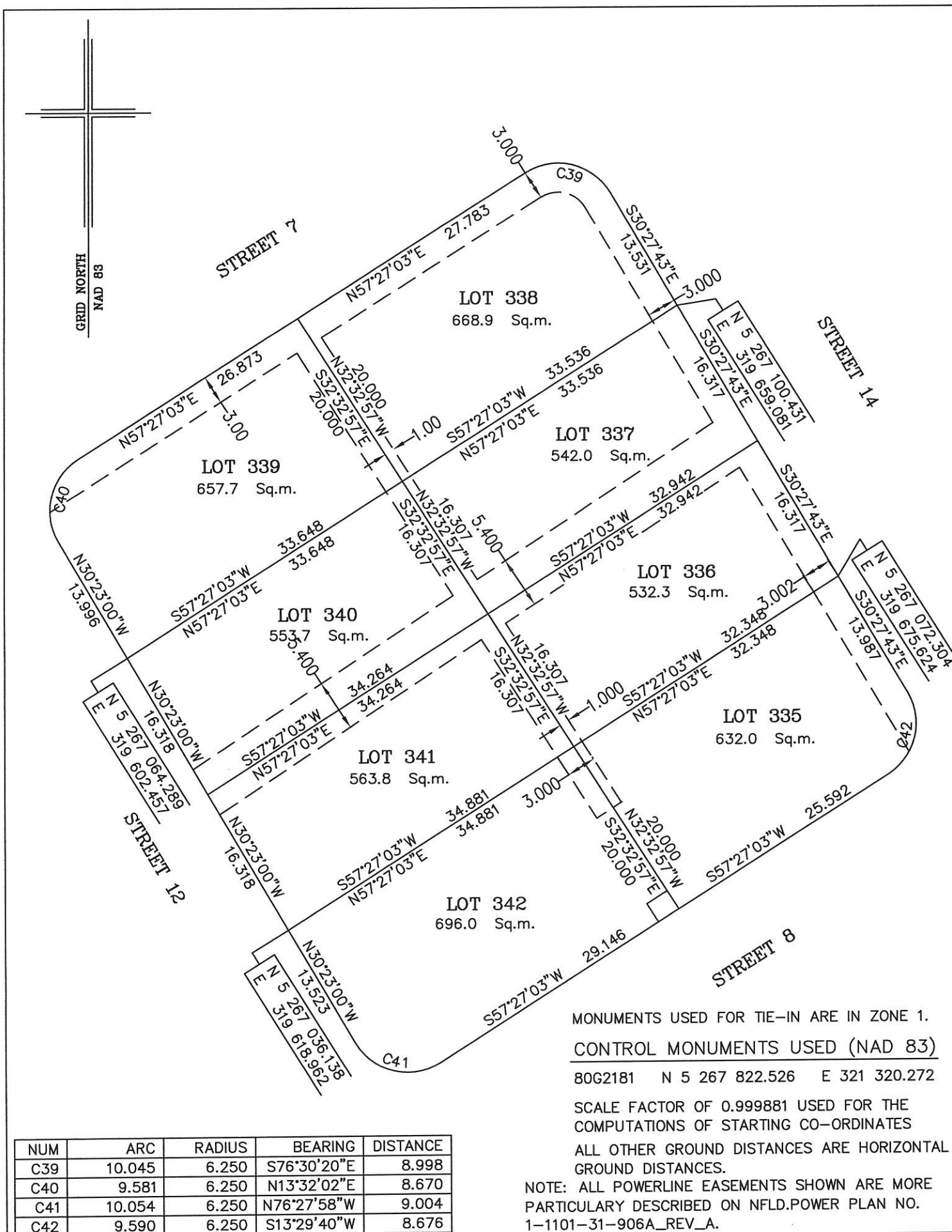
THENCE turning and running by Lot No. 336 South thirty two degrees thirty two minutes fifty seven seconds East sixteen decimal three zero seven metres;

THENCE turning and running by Lot No. 342 South fifty seven degrees twenty seven minutes zero three seconds West thirty four decimal eight eight one metres more or less to the point of beginning and containing in all an area of 563.8 square metres as more particularly described on the plan hereto annexed. **RESERVING NEVERTHELESS** an easement for a powerline as shown on the said attached plan and being more particularly described on the Nfld. Power Plan No. . 1-1101-31-906A_REV_A

ALL bearings are referred to Grid North.

Job No. 12-799

Date: July, 2013



NUM	ARC	RADIUS	BEARING	DISTANCE
C39	10.045	6.250	S76°30'20"E	8.998
C40	9.581	6.250	N13°32'02"E	8.670
C41	10.054	6.250	N76°27'58"W	9.004
C42	9.590	6.250	S13°29'40"W	8.676

MONUMENTS USED FOR TIE-IN ARE IN ZONE 1.

CONTROL MONUMENTS USED (NAD 83)

80G2181 N 5 267 822.526 E 321 320.272

SCALE FACTOR OF 0.999881 USED FOR THE COMPUTATIONS OF STARTING CO-ORDINATES
ALL OTHER GROUND DISTANCES ARE HORIZONTAL GROUND DISTANCES.

NOTE: ALL POWERLINE EASEMENTS SHOWN ARE MORE PARTICULARLY DESCRIBED ON NFLD. POWER PLAN NO. 1-1101-31-906A_REV_A.

PLOT PLAN

LOT NOS. 339-342 STREET 12 & 335-338 STREET 14
WESTGATE SUBDIVISION - STAGE 5
ST. JOHN'S, NL

WILLIAM DOYLE & ASSOCIATES LTD.
Newfoundland Land Surveyors

SCALE: 1:500

JOB NO. 12-799

DATE: JULY 2013

DRAWN BY: R.S.\W.M.D.

