

DESCRIPTION
LOT NO. 339
WESTGATE SUBDIVISION – STAGE 5

ALL THAT piece or parcel of land situate and being on the Northeast side of Street 12, in the City of St. John's, in the Province of Newfoundland and Labrador, Canada, bounded and abutted as follows, that is to say: Beginning at a point, the said point having T.M. Grid Co-ordinates (NAD 83) of N 5,267,064.289 m and E 319,602.457 m with reference to Monument No. 80G2181 with Co-ordinates of N 5,267,822.526 m and E 321,320.272 m;

THENCE running along the Northeastern Limits of Street 12 North thirty degrees twenty three minutes zero seconds West thirteen decimal nine nine six metres; **THENCE** along the arc of a curve having a chord bearing and distance of North thirteen degrees thirty two minutes zero two seconds East eight decimal six seven zero metres and a radius of 6.250 metres;

THENCE turning and running along the Southeastern Limits of Street 7 North fifty seven degrees twenty seven minutes zero three seconds East twenty six decimal eight seven three metres;

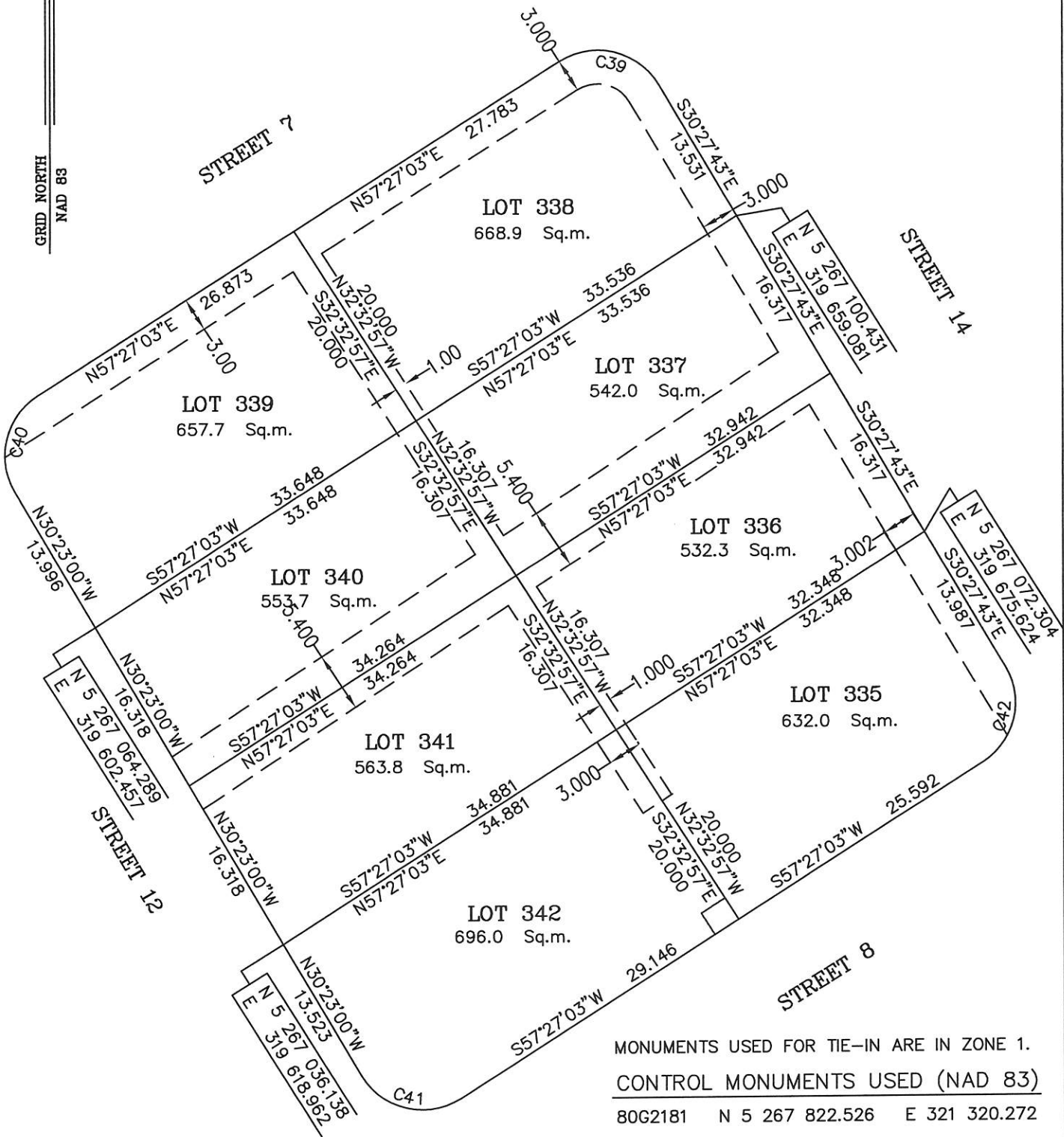
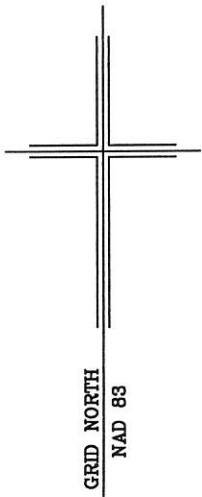
THENCE turning and running by Lot No. 338 South thirty two degrees thirty two minutes fifty seven seconds East twenty metres;

THENCE turning and running by Lot No. 340 South fifty seven degrees twenty seven minutes zero three seconds West thirty three decimal six four eight metres more or less to the point of beginning and containing in all an area of 657.7 square metres as more particularly described on the plan hereto annexed. **RESERVING NEVERTHELESS** an easement for a powerline as shown on the said attached plan and being more particularly described on the Nfld. Power Plan No. . 1-1101-31-906A

ALL bearings are referred to Grid North.

Job No. 12-799

Date: July, 2013



MONUMENTS USED FOR TIE-IN ARE IN ZONE 1.
 CONTROL MONUMENTS USED (NAD 83)
 80G2181 N 5 267 822.526 E 321 320.272
 SCALE FACTOR OF 0.999881 USED FOR THE
 COMPUTATIONS OF STARTING CO-ORDINATES
 ALL OTHER GROUND DISTANCES ARE HORIZONTAL
 GROUND DISTANCES.
 NOTE: ALL POWERLINE EASEMENTS SHOWN ARE MORE
 PARTICULARLY DESCRIBED ON NFLD.POWER PLAN NO.
 1-1101-31-906A_REV_A.

NUM	ARC	RADIUS	BEARING	DISTANCE
C39	10.045	6.250	S76°30'20"E	8.998
C40	9.581	6.250	N13°32'02"E	8.670
C41	10.054	6.250	N76°27'58"W	9.004
C42	9.590	6.250	S13°29'40"W	8.676



PLOT PLAN
 LOT NOS. 339-342 STREET 12 & 335-338 STREET 14
 WESTGATE SUBDIVISION - STAGE 5
 ST. JOHN'S, NL

WILLIAM DOYLE & ASSOCIATES LTD.
 Newfoundland Land Surveyors

SCALE: 1:500	JOB NO. 12-799
DATE: JULY 2013	DRAWN BY: R.S.\W.M.D.