

DESCRIPTION
LOT NO. 334
WESTGATE SUBDIVISION – STAGE 5

ALL THAT piece or parcel of land situate and being on the Southeast side of Street 8, in the City of St. John's, in the Province of Newfoundland and Labrador, Canada, bounded and abutted as follows, that is to say: Beginning at a point, the said point having T.M. Grid Co-ordinates (NAD 83) of N 5,266,988.639 m and E 319,609.590 m with reference to Monument No. 80G2181 with Co-ordinates of N 5,267,822.526 m and E 321,320.272 m;

THENCE running by Lot No. 333 South thirty two degrees thirty two minutes fifty seven seconds East eighty eight decimal three five four metres;

THENCE turning and running by Open Space South thirty five degrees fifty seven minutes forty one seconds West nineteen decimal eight nine nine metres;

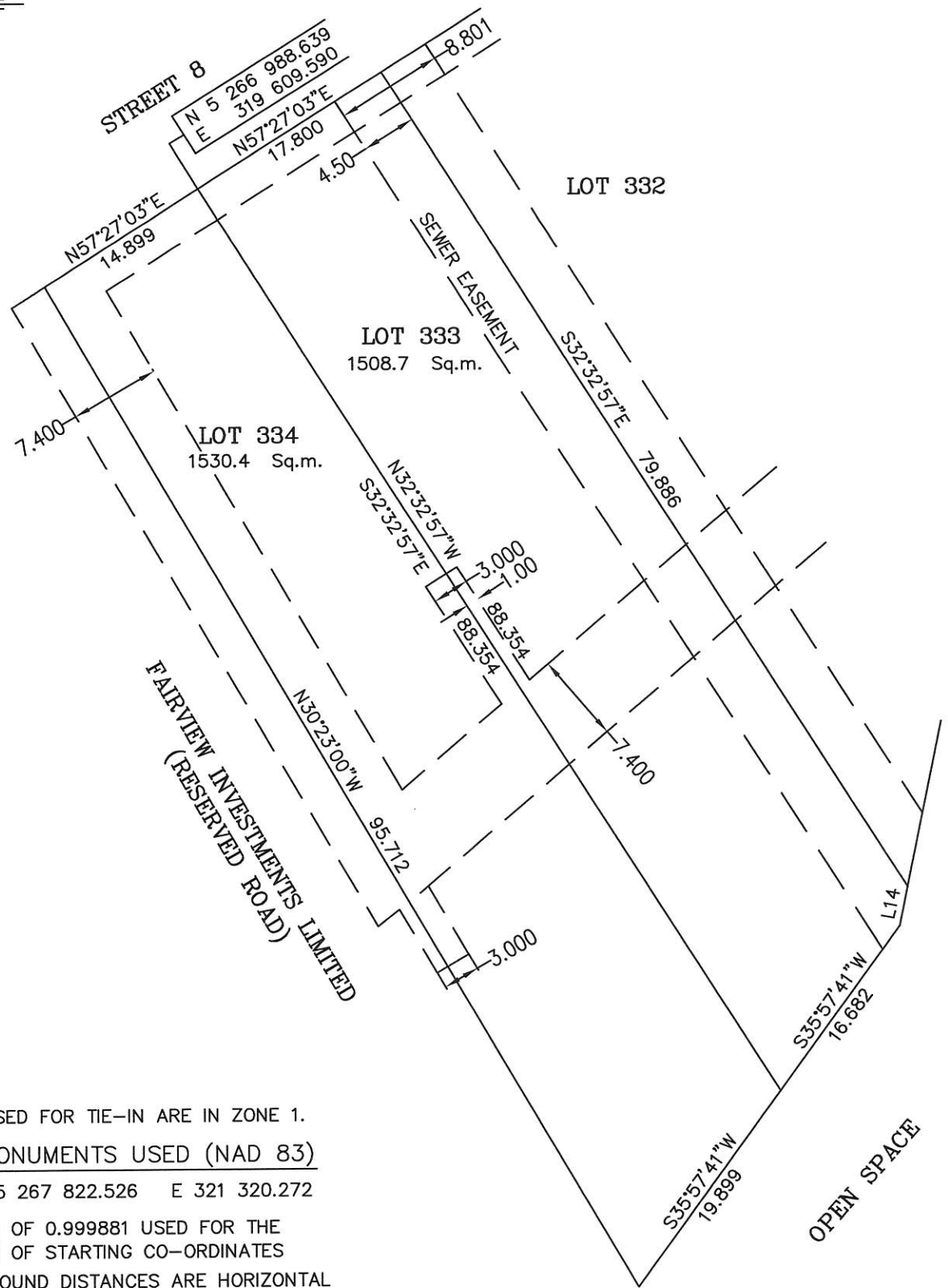
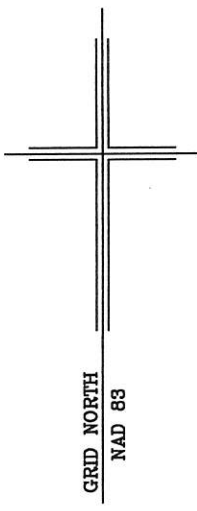
THENCE turning and running by land of Fairview Investments Limited North thirty degrees twenty three minutes zero seconds West ninety five decimal seven one two metres;

THENCE turning and running along the Southeastern Limits of Street 8 North fifty seven degrees twenty seven minutes zero three seconds East fourteen decimal eight nine nine metres more or less to the point of beginning and containing in all an area of 1530.4 square metres as more particularly described on the plan hereto annexed. **RESERVING NEVERTHELESS** an easement for a powerline as shown on the said attached plan and being more particularly described on the Nfld. Power Plan No. 1-1101-31-906A_REV_A

ALL bearings are referred to Grid North.

Job No. 12-799

Date: July, 2013



MONUMENTS USED FOR TIE-IN ARE IN ZONE 1.

CONTROL MONUMENTS USED (NAD 83)

80G2181 N 5 267 822.526 E 321 320.272

SCALE FACTOR OF 0.999881 USED FOR THE COMPUTATIONS OF STARTING CO-ORDINATES

ALL OTHER GROUND DISTANCES ARE HORIZONTAL GROUND DISTANCES.

NOTE: ALL POWERLINE EASEMENTS SHOWN ARE MORE PARTICULARLY DESCRIBED ON NFLD.POWER PLAN NO. 1-1101-31-906A_REV_A.

NUM	BEARING	DISTANCE
L14	S11°28'01"W	3.278



PLOT PLAN LOT NOS. 333-334 STREET 8 WESTGATE SUBDIVISION - STAGE 5 ST. JOHN'S, NL	
WILLIAM DOYLE & ASSOCIATES LTD. Newfoundland Land Surveyors	
SCALE: 1:500	JOB NO. 12-799
DATE: JULY 2013	DRAWN BY: R.S.\W.M.D.