

DESCRIPTION
LOT NO. 333
WESTGATE SUBDIVISION – STAGE 5

ALL THAT piece or parcel of land situate and being on the Southeast side of Street 8, in the City of St. John's, in the Province of Newfoundland and Labrador, Canada, bounded and abutted as follows, that is to say: Beginning at a point, the said point having T.M. Grid Co-ordinates (NAD 83) of N 5,266,988.639 m and E 319,609.590 m with reference to Monument No. 80G2181 with Co-ordinates of N 5,267,822.526 m and E 321,320.272 m;

THENCE running along the Southeastern Limits of Street 8 North fifty seven degrees twenty seven minutes zero three seconds East seventeen decimal eight zero zero metres;

THENCE turning and running by Lot No. 332 South thirty two degrees thirty two minutes fifty seven seconds East seventy nine decimal eight eight six metres;

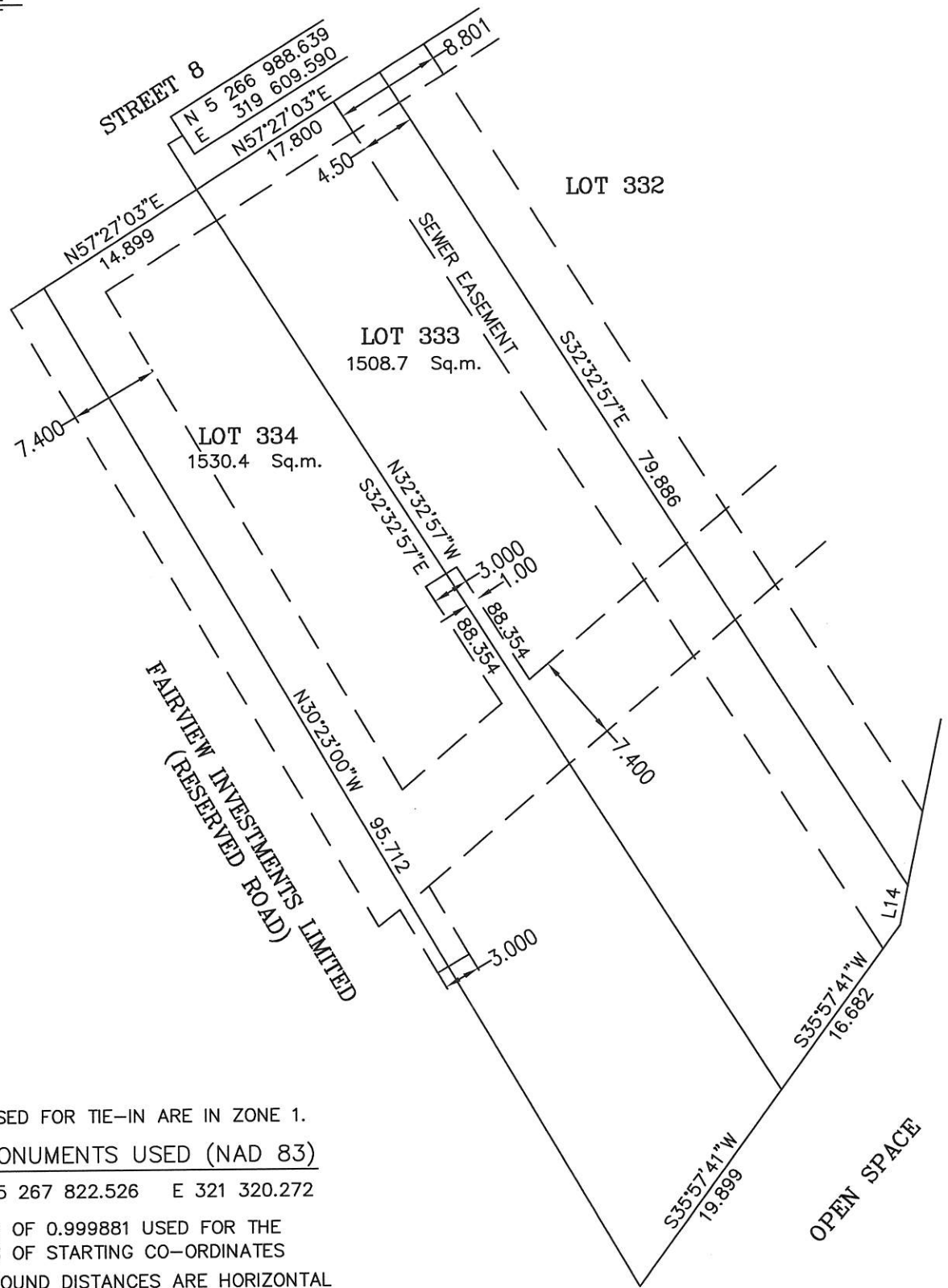
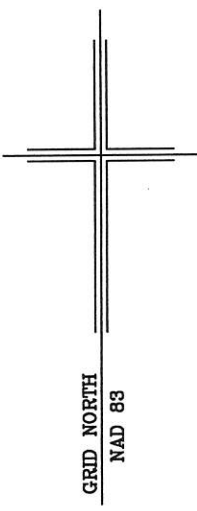
THENCE turning and running by Open Space South eleven degrees twenty eight minutes zero one seconds West three decimal two seven eight metres; **THENCE** South thirty five degrees fifty seven minutes forty one seconds West sixteen decimal six eight two metres;

THENCE turning and running by Lot No. 334 North thirty two degrees thirty two minutes fifty seven seconds West eighty eight decimal three five four metres more or less to the point of beginning and containing in all an area of 1508.7 square metres as more particularly described on the plan hereto annexed. **RESERVING NEVERTHELESS** an easement for a powerline as shown on the said attached plan and being more particularly described on the Nfld. Power Plan No. 1-1101-31-906A_REV_A **AND ALSO** a sewer easement 4.4m wide extending along the Northeastern boundary.

ALL bearings are referred to Grid North.

Job No. 12-799

Date: July, 2013



MONUMENTS USED FOR TIE-IN ARE IN ZONE 1.

CONTROL MONUMENTS USED (NAD 83)

80G2181 N 5 267 822.526 E 321 320.272

SCALE FACTOR OF 0.999881 USED FOR THE COMPUTATIONS OF STARTING CO-ORDINATES

ALL OTHER GROUND DISTANCES ARE HORIZONTAL GROUND DISTANCES.

NOTE: ALL POWERLINE EASEMENTS SHOWN ARE MORE PARTICULARLY DESCRIBED ON NFLD.POWER PLAN NO. 1-1101-31-906A_REV_A.

NUM	BEARING	DISTANCE
L14	S11°28'01"W	3.278

PLOT PLAN

**LOT NOS. 333-334 STREET 8
WESTGATE SUBDIVISION - STAGE 5
ST. JOHN'S, NL**

WILLIAM DOYLE & ASSOCIATES LTD.
Newfoundland Land Surveyors

SCALE: 1:500

JOB NO. 12-799

DATE: JULY 2013

DRAWN BY: R.S.\W.M.D.



William Doyle